



# OCEANWALKER S60

REVOLUTION EDITION





# *THE NEXT ERA*

OF ECO YACHTING



## OCEANWALKER S60 REVOLUTION EDITION

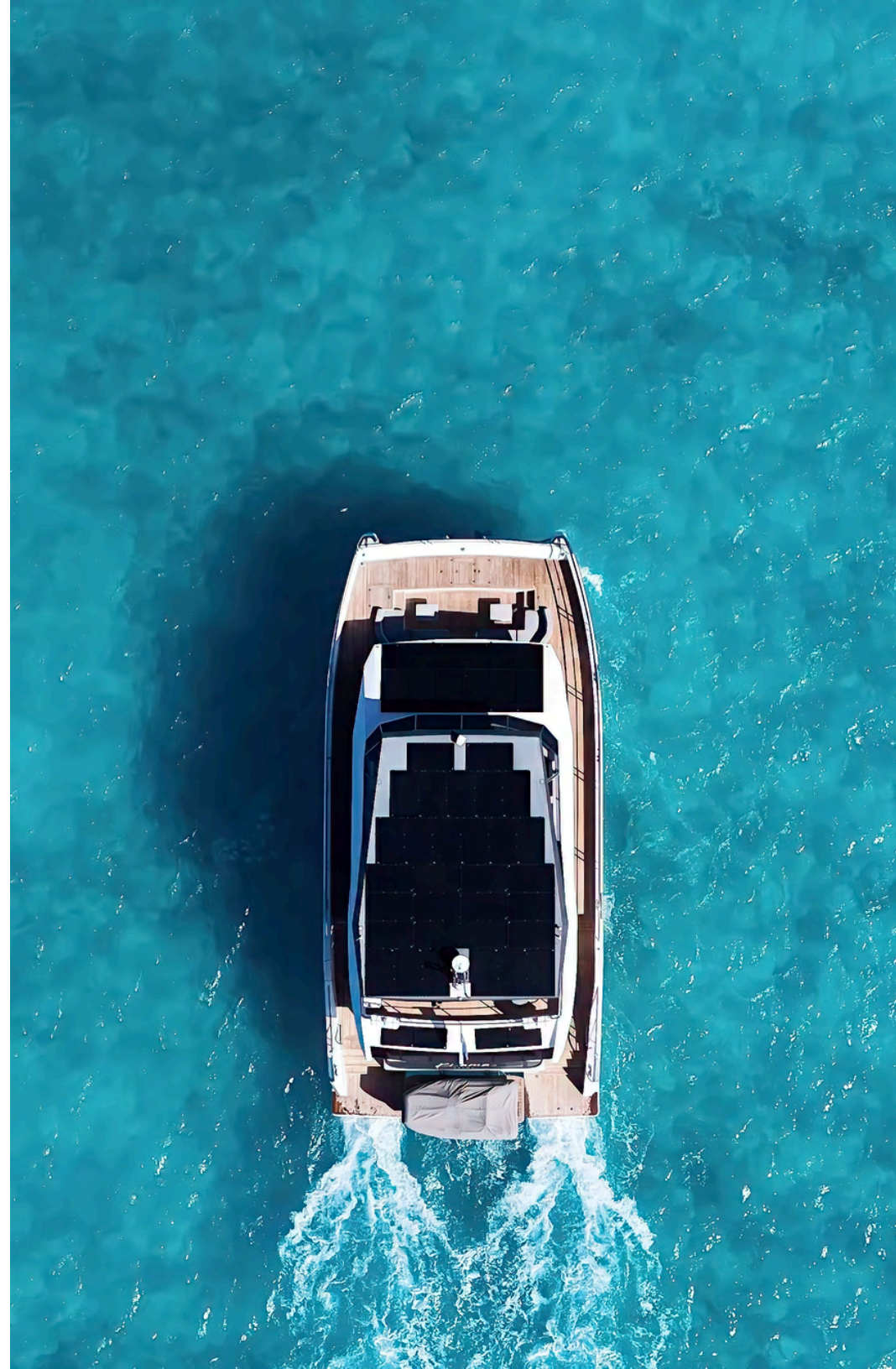
The Oceanwalker S60 Revolution Edition is a testament to meticulous craftsmanship and forward-thinking design. Developed under the close supervision of Revolution Marine Group's technical team, this 60-foot masterpiece embodies a seamless harmony of elegance, innovation, and environmental awareness. Every detail has been considered to create an experience of quiet sophistication, where advanced technology enhances comfort, and contemporary design meets the timeless beauty of life at sea.

# A GREEN BLUEPRINT FOR SUSTAINABLE CRUISING

---

Sustainability is woven into every element of the S60's design. Expansive solar panels across the flybridge capture the sun's energy to support onboard systems, while an efficient generator ensures optimal power with minimal fuel use. Every component is crafted to reduce environmental impact without compromising comfort or performance, redefining what responsible luxury on the water can be.

The Oceanwalker S60e takes this vision even further. With electric propulsion and advanced solar integration, it offers near-silent operation and extended independence at sea. Elegant, efficient, and environmentally conscious, the S60e marks a new chapter in sustainable yachting.







## ELEVATING MOMENTS AT SEA WITH 360° VIEWS

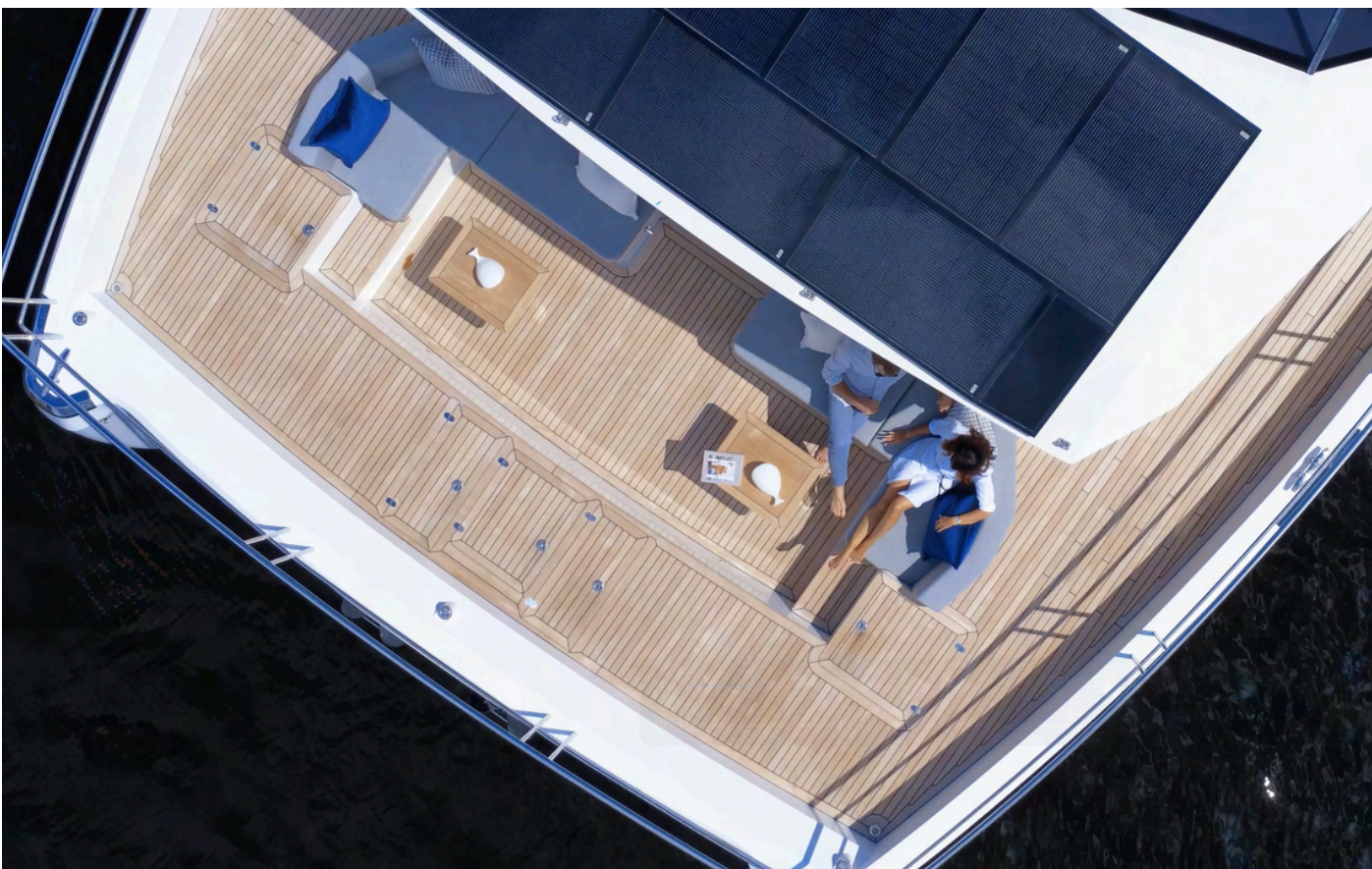
The flybridge is an unrivaled vantage point for socializing, relaxing, and immersing yourself in panoramic ocean views. Expansive seating, plush sun loungers, and a fully equipped wet bar create an elegant, open-air environment designed for unforgettable gatherings or quiet escapes. Thoughtfully integrated design ensures seamless movement and effortless comfort, allowing guests to enjoy the sun, breeze, or shade at their leisure while taking in the ever-changing scenery.





## BEST-IN-CLASS SPACE AND FLEXIBLE LIVING

Generous volume and intelligent design make the S60 flybridge a true leader in space utilization. Convertible dining tables transform into lounge areas, offering flexible layouts tailored to your needs, whether entertaining a lively group or enjoying a serene moment with family. Every element has been designed with versatility in mind, creating a fluid space that adapts to any occasion while maintaining the sophistication and comfort expected of a luxury power catamaran.



# EFFORTLESS COMFORT, INFINITE VIEWS

---

From bright sunshine to gentle shade, the foredeck lounge adapts to every preference. This thoughtfully crafted space is a sanctuary for connection, conversation, or quiet reflection at sea.







## AN INVITATION TO UNWIND

The aft deck offers a seamless connection to the sea, inviting you to relax in style. With generous seating and unobstructed views, it's the perfect place to share a meal, a toast, or a quiet moment at anchor. A well-appointed dining area allows for alfresco meals at any time of day, while thoughtful design ensures every detail enhances comfort, conviviality, and the effortless pleasure of life at sea.



## SEAMLESS ACCESS, ULTIMATE CONVENIENCE

The aft swim platform offers effortless access to the water, creating the perfect space for both relaxation and activity. Whether lounging comfortably while enjoying the sea breeze or rinsing off after a swim under the outdoor shower, this versatile area combines practicality with leisure. Its thoughtful design ensures every moment—from water sports to quiet sunbathing—is enhanced by convenience and comfort at the water's edge.



## A SANCTUARY OF REFINED COMFORT

---

The spacious saloon boasts a contemporary design, with abundant natural light flooding through the panoramic windows. The meticulously crafted furnishings and exquisite finishes create an ambiance of refined elegance, while the open layout fosters a seamless flow between the saloon, dining area, and galley.





## YOUR PRIVATE OASIS AWAITS

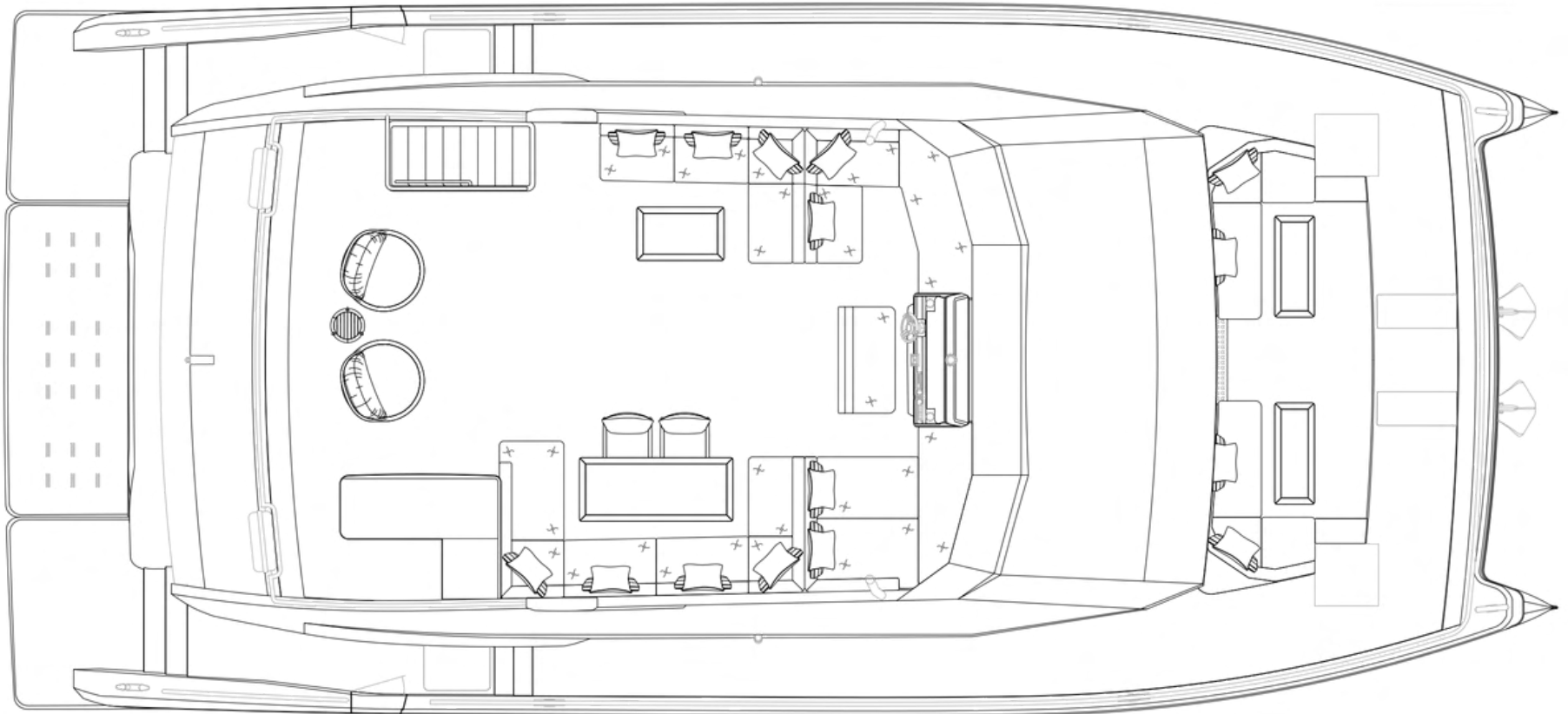
---

Spacious accommodations provide a haven of tranquility and privacy. Flexible arrangements are offered in either a 3 or 4 stateroom layout with en-suite bathrooms.



OCEANWALKER S60

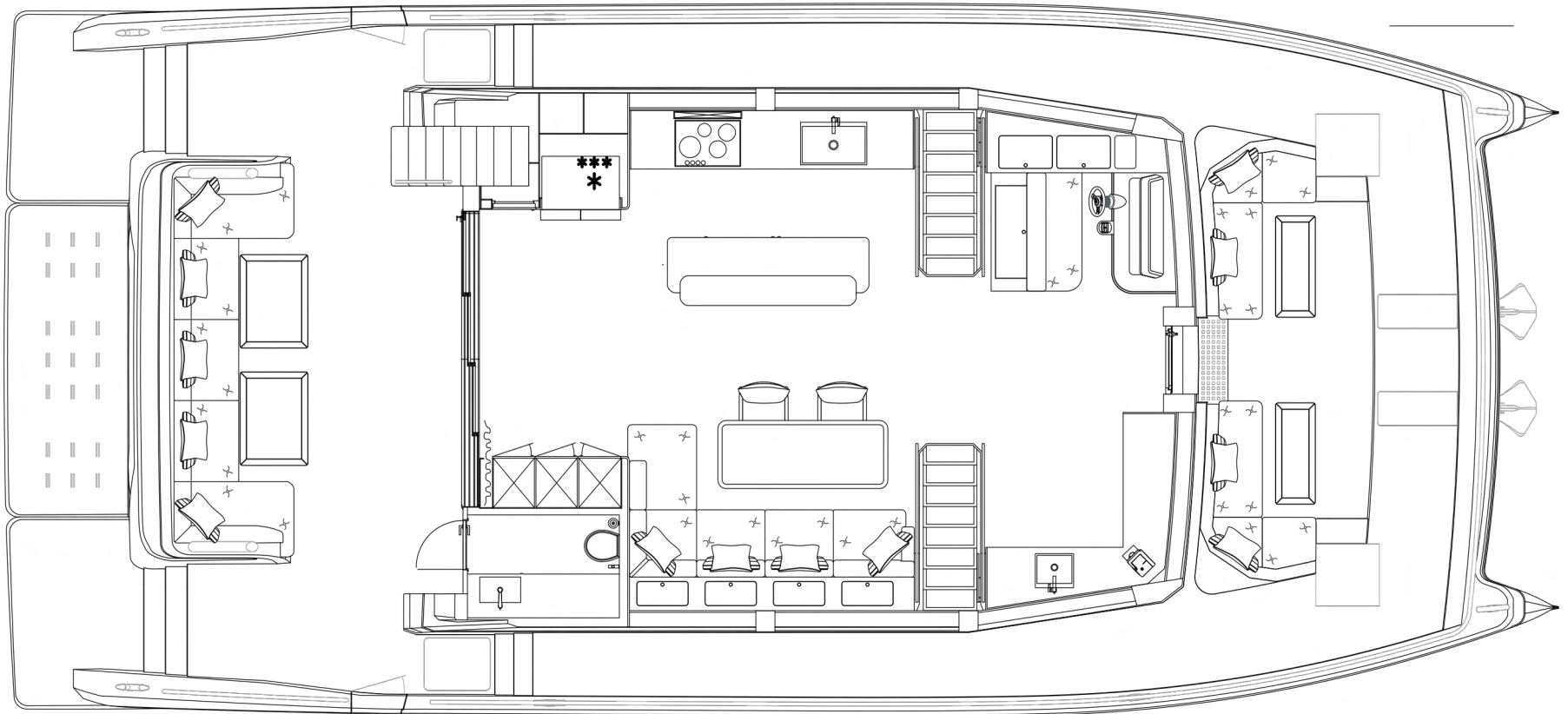
# GENERAL ARRANGEMENTS



FLYBRIDGE

OCEANWALKER S60

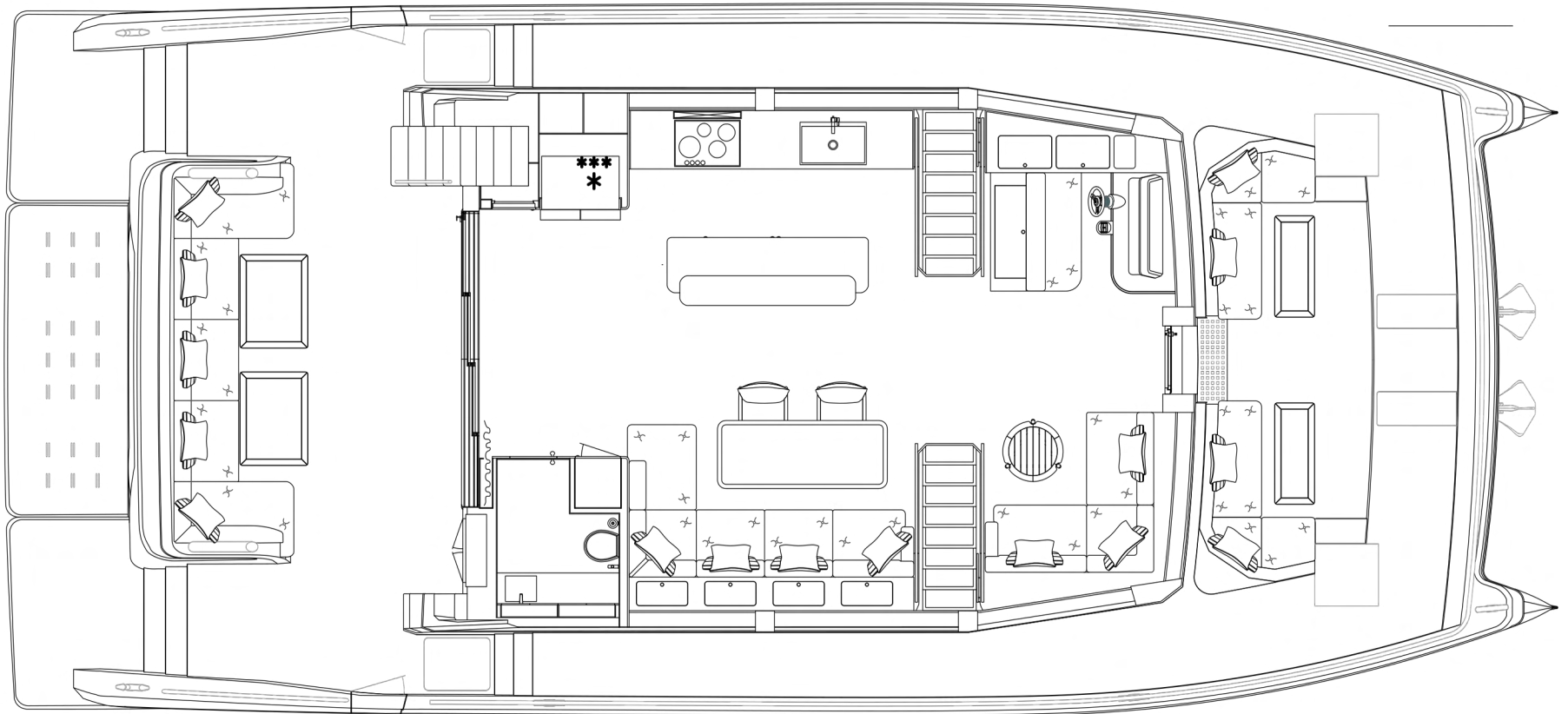
# GENERAL ARRANGEMENTS



MAIN DECK (FOWARD WET BAR)

OCEANWALKER S60

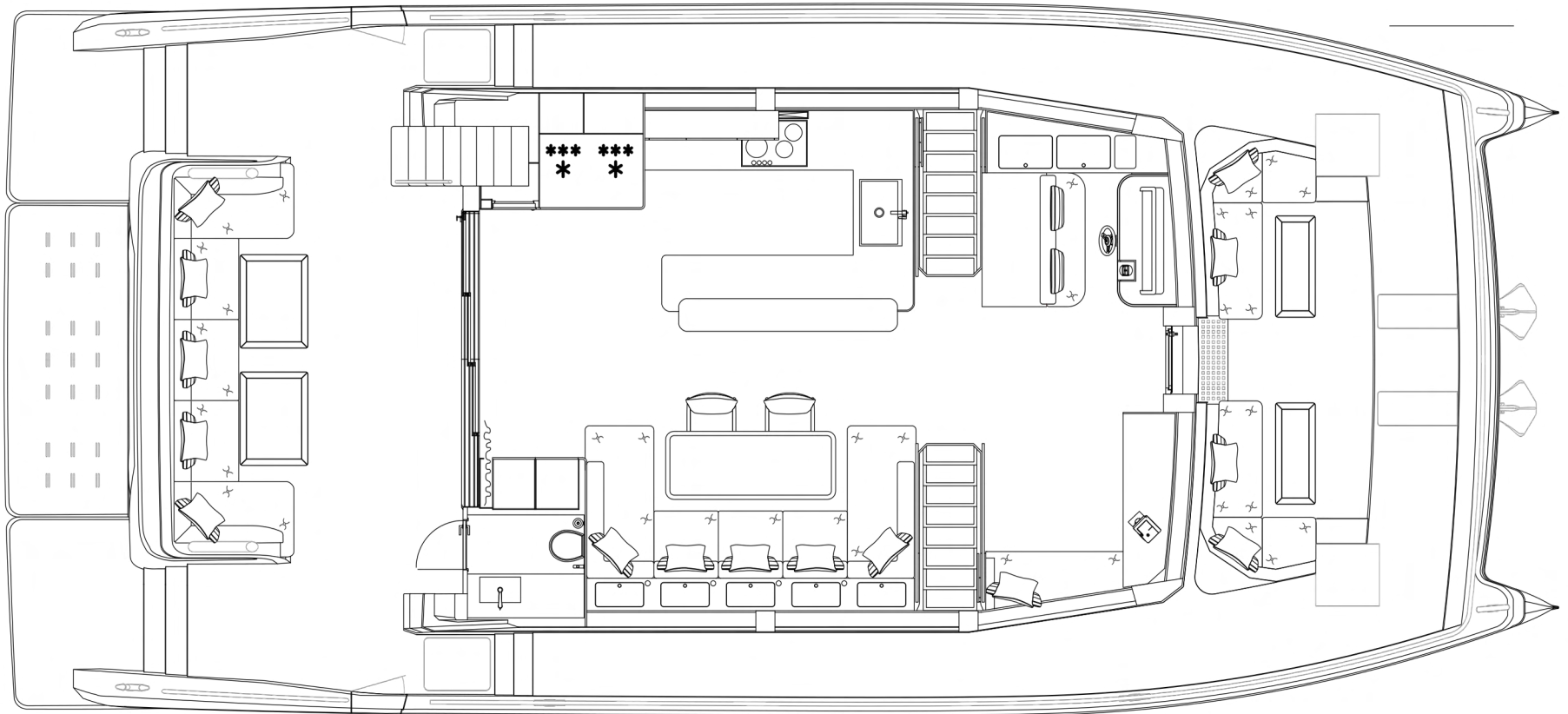
# GENERAL ARRANGEMENTS



MAIN DECK (FORWARD LOUNGE)

OCEANWALKER S60

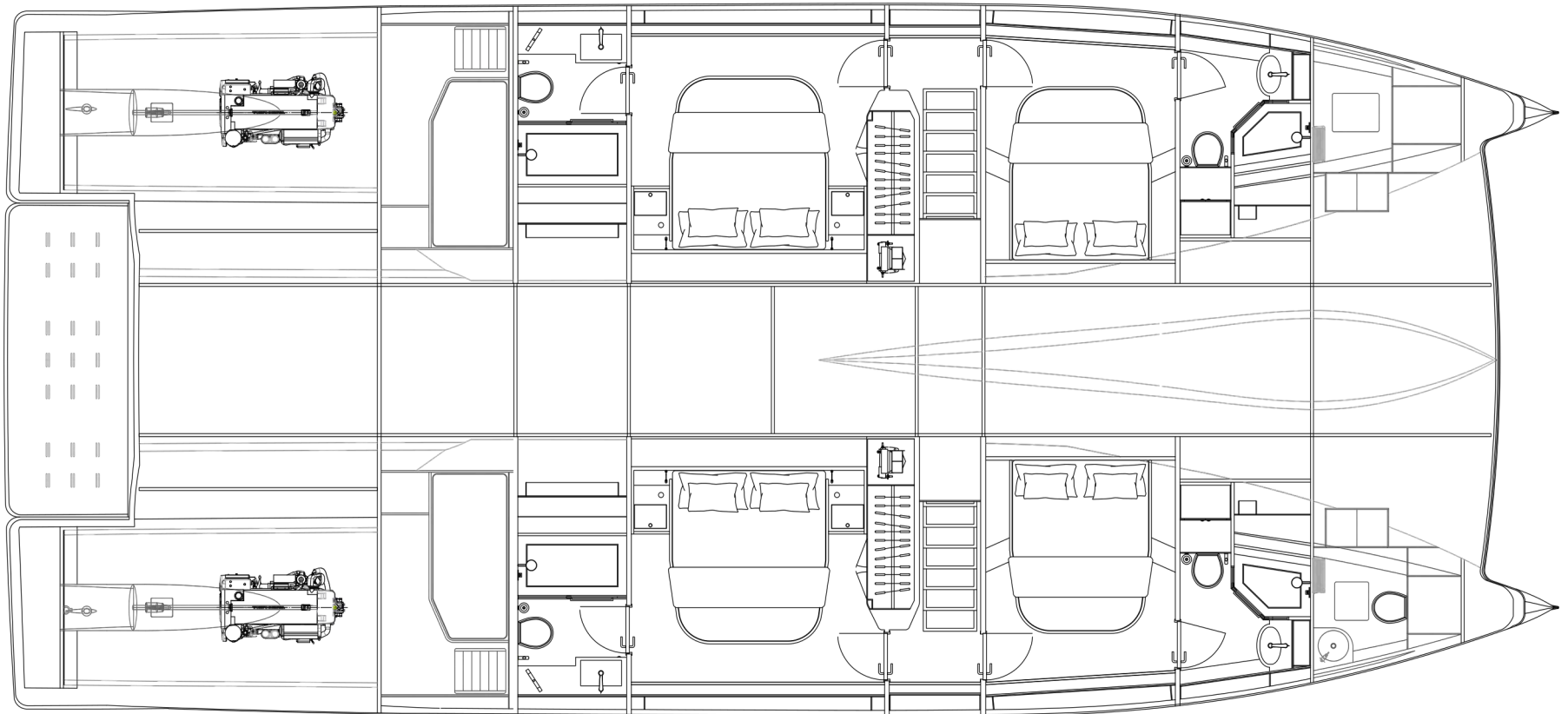
# GENERAL ARRANGEMENTS



MAIN DECK (WRAP-AROUND GALLEY & WET BAR)

OCEANWALKER S60

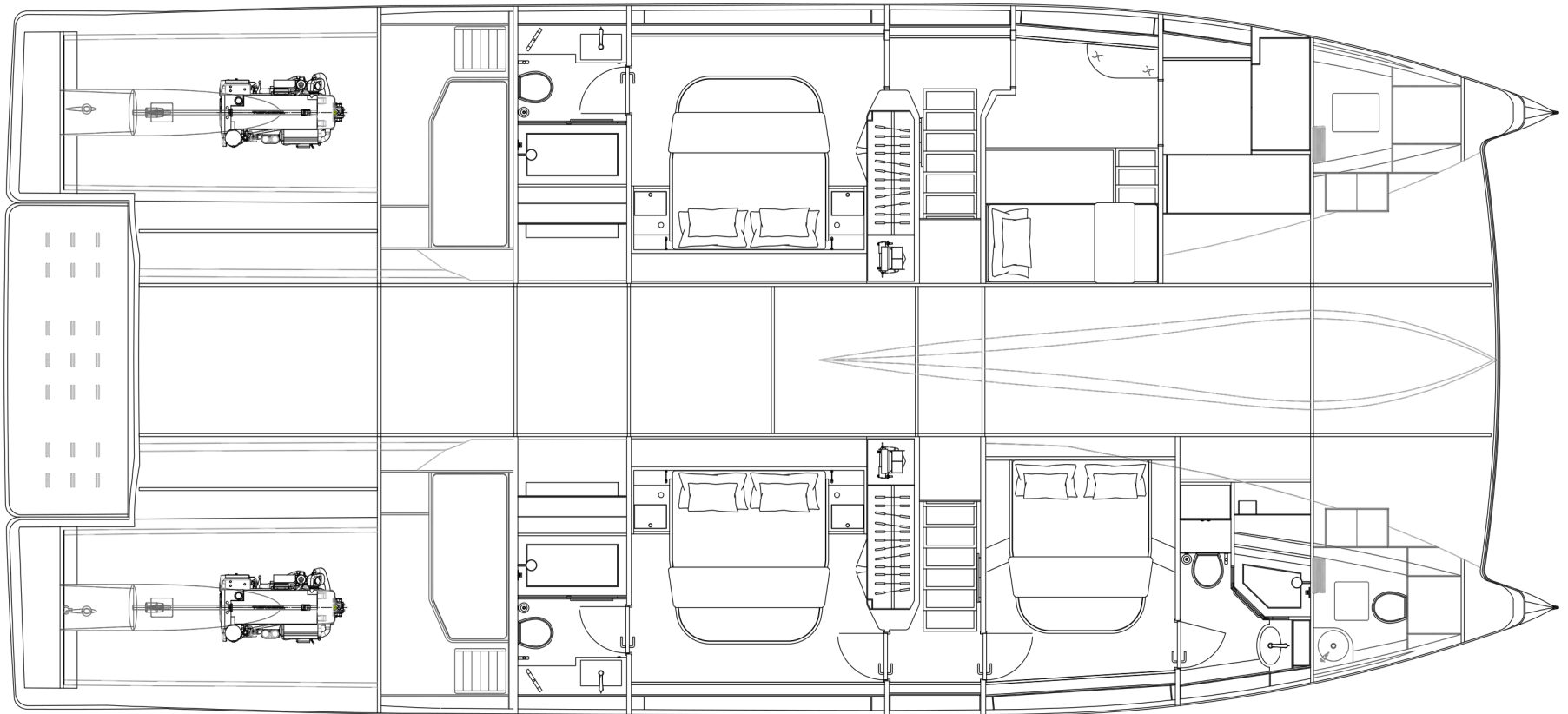
# GENERAL ARRANGEMENTS



LOWER DECK (4 CABINS)

OCEANWALKER S60

# GENERAL ARRANGEMENTS



LOWER DECK (3 CABINS INC. PRIMARY WITH OFFICE)



# PRINCIPAL CHARACTERISTICS

---

## LENGTH OVERALL

18.29 M / 60FT

## BEAM

8.38 M / 27.49 FT

## DRAFT

1 M / 3.28 FT

## DISPLACEMENT

42,000 KG / 92,594 LB

## FUEL CAPACITY

8000 LITERS / 2113 US GAL.

## FRESH WATER CAPACITY

800 LITERS / 211.34 US GAL.

## HOLDING TANK CAPACITY

2 X 380 LITERS / 2 X 100.39 US GAL.

## GENERATOR

KOHLER 20.5KW, 60HZ (STANDARD) | 31KW (UPGRADE)

## TOTAL POWER

1200 HP

## ENGINES

VOLVO PENTA D8 TWIN 600 (STANDARD)

## MAXIMUM SPEED

21 KNOTS (VIA STANDARD ENGINES)

## SOLAR OUTPUT

9KWP

## BATTERY CAPACITY

80KWH (STANDARD) | 120KWH (UPGRADE)

## ACCOMMODATION

UP TO 10 GUESTS & 3 CREW



REVOLUTION

MARINE GROUP

For more information visit  
[REVOLUTIONMARINEGROUP.COM](http://REVOLUTIONMARINEGROUP.COM)

Disclaimer: This document is not contractual. All the information, specifications, descriptions, and images contained in this brochure are non-binding and subject to change.